

JULY | AUGUST 2010

# House Beautiful

is small  
**THE NEW BIG?**

*The*  
**ONE-DAY  
BEDROOM  
MAKEOVER**  
*(dreamy!)*

390 SQ. FT.  
**ONE-BEDROOM**

1,400 SQ. FT.  
**COTTAGE**

650 SQ. FT.  
**GUESTHOUSE**

450 SQ. FT.  
**STUDIO**

1,200 SQ. FT.  
**BEACH HOUSE**

**15**  
**GREAT  
TRICKS** *with*  
**MIRRORS**

# BATH OF THE MONTH

## POWDER ROOMS

Nothing makes guests feel more pampered than a stylish powder room. Here, 25 of our favorites.

Written by  
DOUGLAS BRENNER

### 1. ELEGANT ALCOVE

A glimpse of an inner space—like the arched alcove that designer ANNE MILLER provides here—makes a powder room feel larger.



### 2. DEEP COLOR

Paint makes the big statement here, giving a narrow space the depth of sea and sky. SALLY MARKHAM chose a gloss finish to catch sunshine, or lantern light.



### 3. BOLD PATTERN

The oversize motifs of floral wallpaper and a geometric mirror punch up a tiny room by MEG BRAFF. Liberal dashes of white keep everything light and airy.



### 4. RED MAPLE

Sleek features are adornment enough for lacquered aniline-dyed maple paneling and cabinetwork, as DAVID EASTON proves in this tribute to luxe modernity.



### 5. PEDESTAL SINK

Space-saving yet stately, the washbasin's pillarlike support is a suitably classical mate for paneled woodwork in an interior by NANCY BOSZHARDT.



### 6. MIXED TEXTURES

MADLINE STUART lime-washed these walls to harmonize with the varied finishes of a marble sink, a bronze backsplash, and an iron mirror frame and sconces.



### 7. PAINTED WAINSCOT

Reminiscent of an era when indoor plumbing was still a novelty, old-school V-groove wainscoting feels right at home in MICHAEL S. SMITH's traditional ensemble.



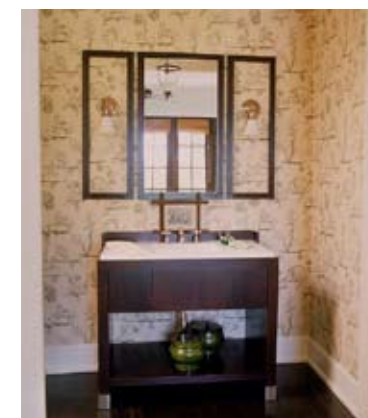
### 8. URN BASIN

This iron garden ornament was brought indoors by BOBBY McALPINE and SUSAN FERRIER. A stone platform raises the urn's inset basin to conventional sink height.



### 9. CHINOISERIE

ASHLEY WHITTAKER replaced clinical ceiling-high white tile with fanciful Asian-themed wallpaper (lampshades mimic the red parasols) and a faux-bamboo mirror.



### 10. FRAMED SCONCES

By symmetrically outlining two sconces to match the ebonized mirror frame, ROBIN BELL created a triptych wide enough to hold its own above a grand vanity.



### 11. SIDE TABLE

Because a full second bath also serves as the powder room in this house, JOE NYE installed a mini "butler's tray" laden with amenities to delight guests.



### 12. ODD ANGLE

Turning a quirk into an asset, STEPHEN SHUBEL glorified an oblique wall with the decorative silhouettes of a scallop-shell sink and a Baroque carved mirror frame.



### 13. VESSEL SINK

PHOEBE HOWARD elevates an everyday ritual with this Carrara marble basin. The faucet emerges from a stone-mosaic dado in a spectrum of watery hues. >>

ERIC PIASECKI, OPPOSITE; TOP ROW: PIETER ESTERSOHN, JAMES MERRELL, JOHN GOULD BESSLER, JOHN KERNICK; MIDDLE ROW: VICTORIA PEARSON, LISAROMERIN, DON FREEMAN, FRANCESCO LAGNESE; BOTTOM ROW: DON FREEMAN, JOHN COOLIDGE, TIM STREET-PORTER, LAURAMOSS

# BATH OF THE MONTH



## 14. SILVER VANITY

In a subtle variation on the standard shine of chrome and mirror glass, **SALLY MARKHAM** evokes boudoir glamour with a vanity sheathed in silver leaf.



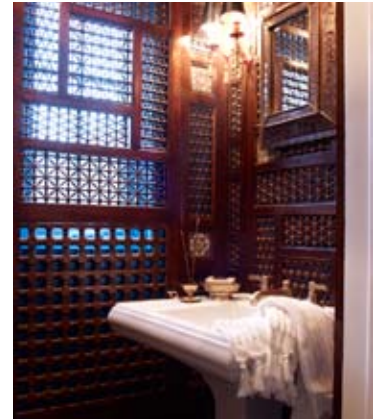
## 15. GUEST TOWELS

Embroidered linens double as wall decoration in this whimsical **JEFFREY BILHUBER** design. A rough-cut marble sink contrasts with the delicate needlework.



## 16. WOOD ACCENTS

Enchanted forest meets princely bower, thanks to **HB HOME**'s pairing of woodland wallpaper with an inlaid cabinet they converted into a vanity.



## 17. EXOTIC ACCENTS

**LAURA KIRAR** adapted antique Moroccan fretwork panels to transform a dark leftover space below a stairway into an alluring Orientalist jewel box.



## 18. TOILE ALL OVER

Rooms under eaves can feel cramped, but **TOM SCHEERER** masked this low slope by covering it in an aviary-patterned toile that seems to open up the whole space.



## 19. REPEATED THEME

**KARI CUSACK** wittily paired a porcelain sink with the imaginary porcelains on ginger-jar wallpaper. An actual vase, reflected in the mirror, echoes the visual pun.



## 20. FABRIC COVER-UP

Rather than tear out unsightly wall tile, **T. KELLER DONOVAN** hid it behind pleated cotton hung from a ceiling-mounted track. The same fabric skirts the vanity.



## 21. DIVERTING VIEW

Lively scenes and vivid wallpaper reds, plus an eye-catching crimson shade, distract attention from the awkward space **MEG BRAFF** had to work with.



## 22. SHELL COLLAGE

Marine life is a familiar powder-room theme. **LAWRENCE RIZKOWSKY**'s beach-combing yielded this extraordinary vanity, a shellwork fantasy of his own design.



## 23. FLATTERING LIGHT

**CINDY SMITH** assembled pieces of antiqued mirror to compose a romantic looking glass. A hammered-finish basin completes the effect of bathing in a warm glow.



## 24. BLACK AND WHITE

Flocked wallpaper inspired **STEPHEN SHUBEL**'s graphic scheme. Perforated Moroccan sconces and a two-tone sink enhance the drama of light and dark.



## 25. TIGHT CORNER

Corner sinks were invented for problem areas like this, where doorways limit usable space. **MIMI McMAKIN**'s neat application fits its rustic setting to a tee. ✨

TOP ROW: PETER ESTERSON; DON FREEMAN; JOHN GOULD BESSLER; JULIAN WASS; MIDDLE ROW: FRANCESCO LAGNESE; KARYN MILLET; KEN HAYDEN; SIMON LIPTON; BOTTOM ROW: REED DAVIS; JOHN GOULD BESSLER; JEREMY SAMUELSON; FRANCESCO LAGNESE. FOR MORE DETAILS, SEE RESOURCES